



WASHINGTON COUNTY TRANSPORTATION STUDY



Public Affairs Forum

February 2, 2015

Presenter:

Chris Deffebach, Washington County



DAVID EVANS
AND ASSOCIATES, INC.



Purpose

In 2013 OR Legislature allocated funding to County for study that would:

“...evaluate the long-term transportation strategies and investments needed to sustain the county’s economic health and quality of life in the coming decades”

Past



Hillsboro, circa 1964



Hillsboro, circa 2014



Study vs Plan vs Plan Development

Study

- Beyond 20 years
- Big picture thinking
- Assess cumulative impacts of plausible future scenarios
- Not an adopted planning document
- Inform future decisions

Transportation System Plan (TSP)

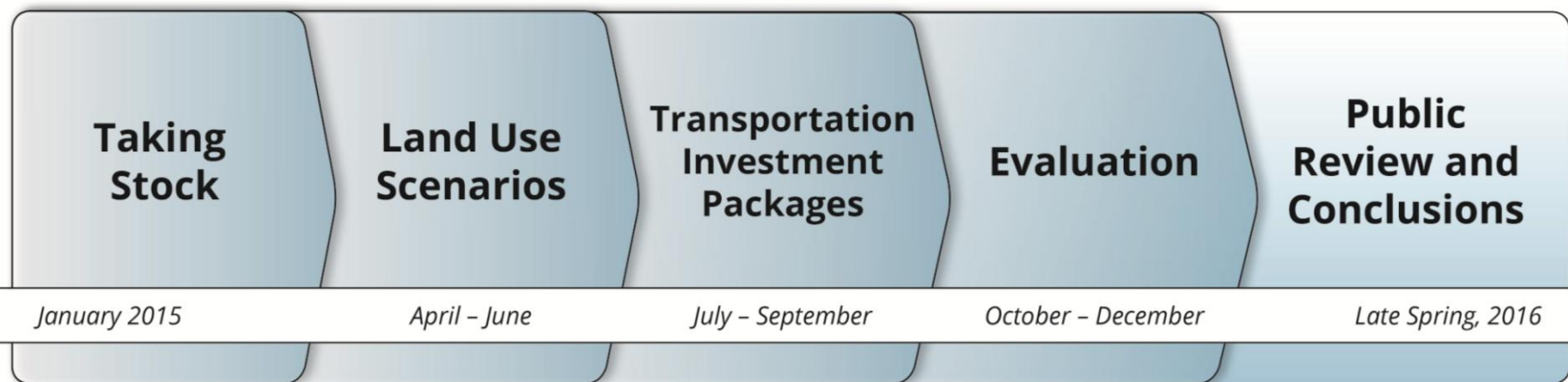
- Within 20 years
- Adopted as an element of the Comprehensive Framework Plan
- Sets goals, objective and strategies
- Identifies transportation facility need, mode, function and general location

Project Development

- 1-5 year timeframe
- Implements the TSP
- Specific projects prioritized
- Preliminary project scoping and design

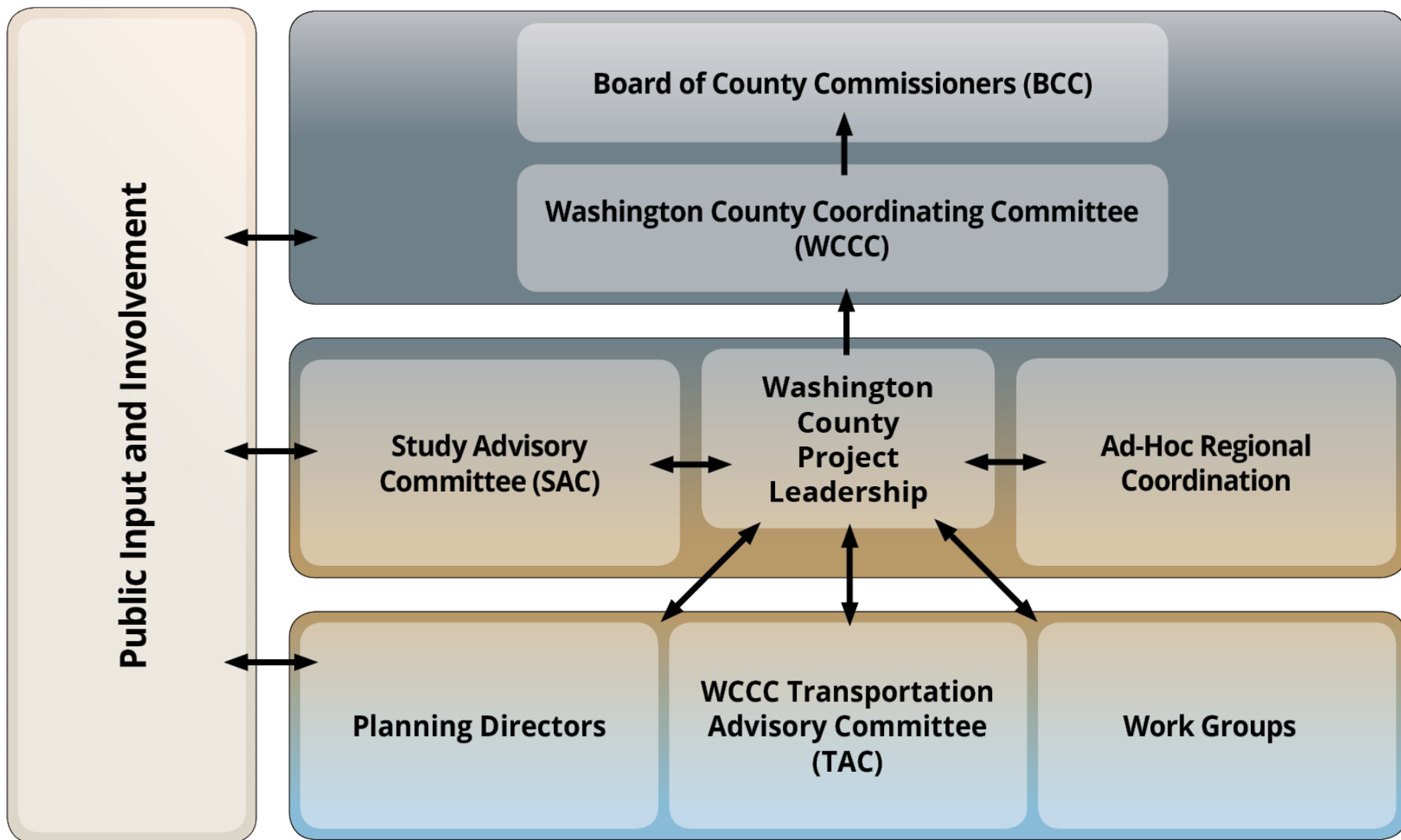


Study Process



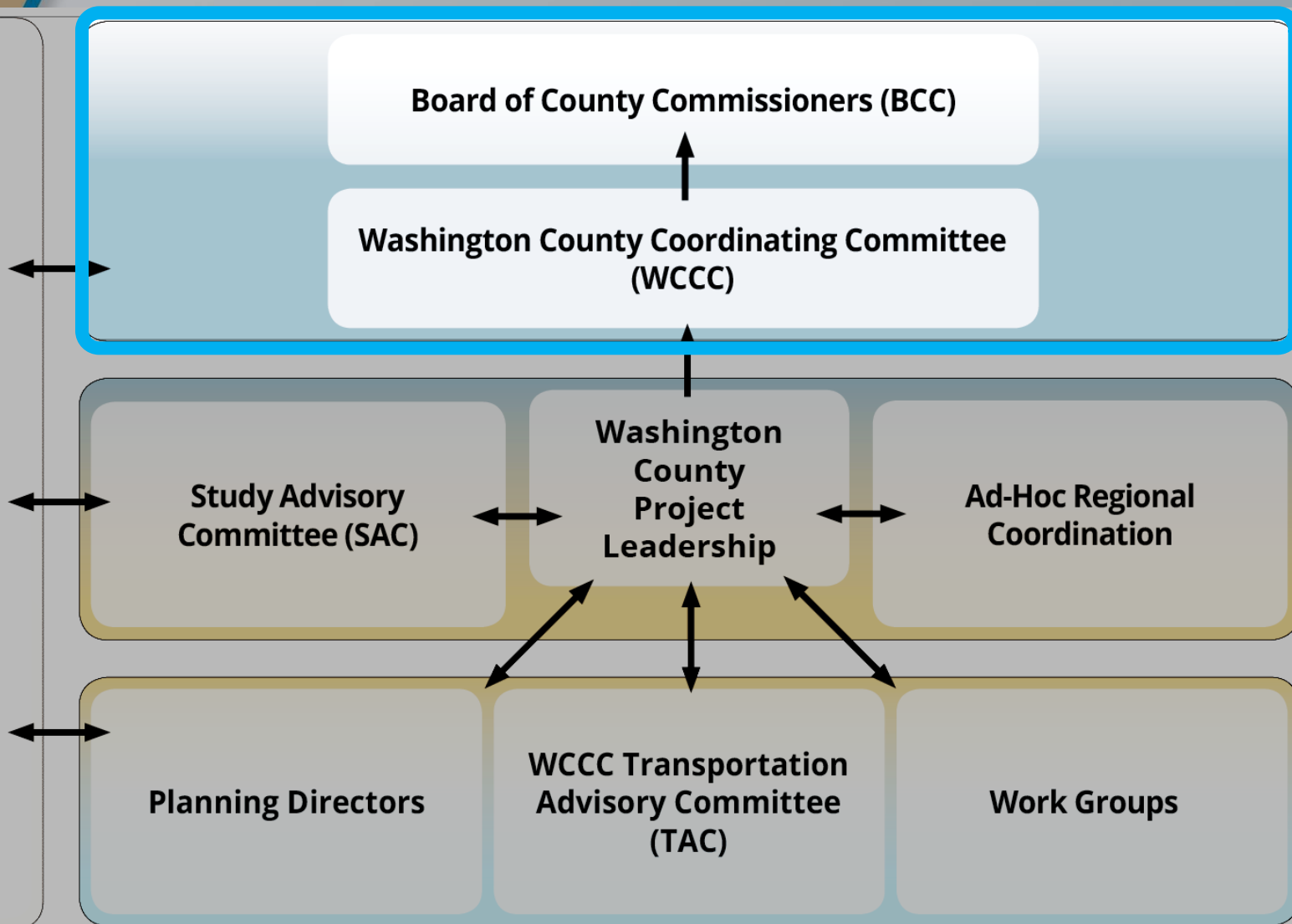


Input & Review



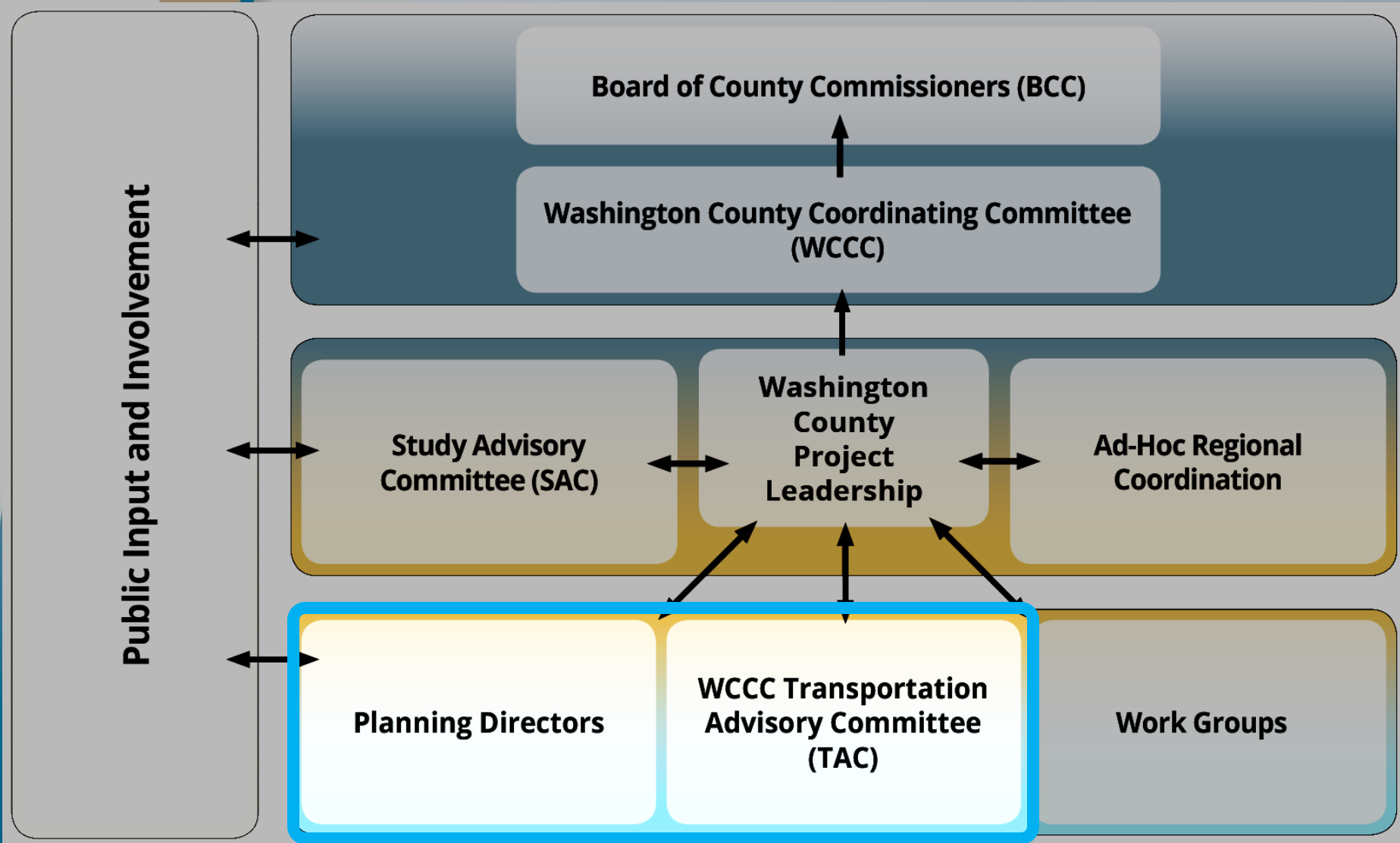
Input & Review

Public Input and Involvement

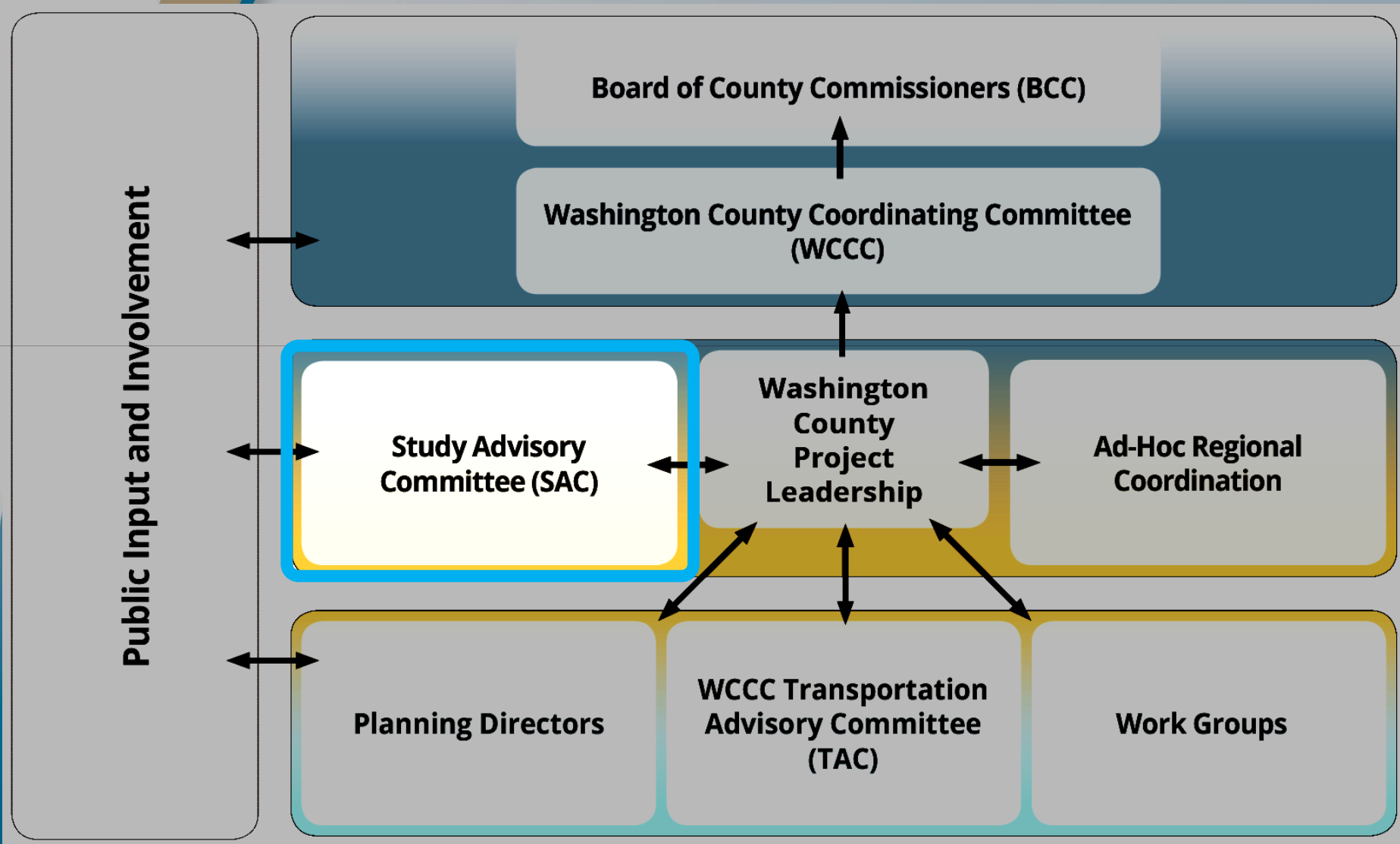




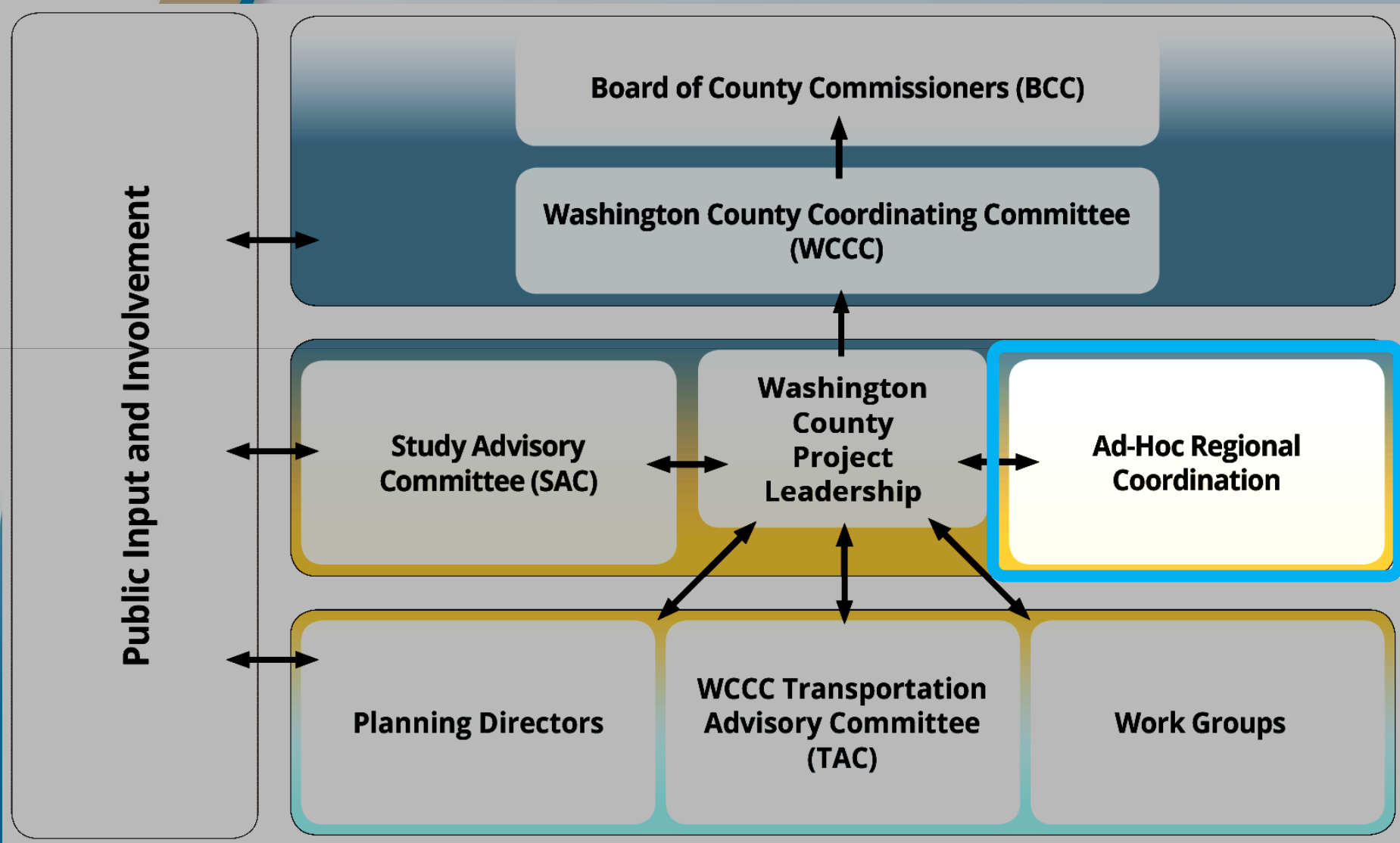
Input & Review



Input & Review

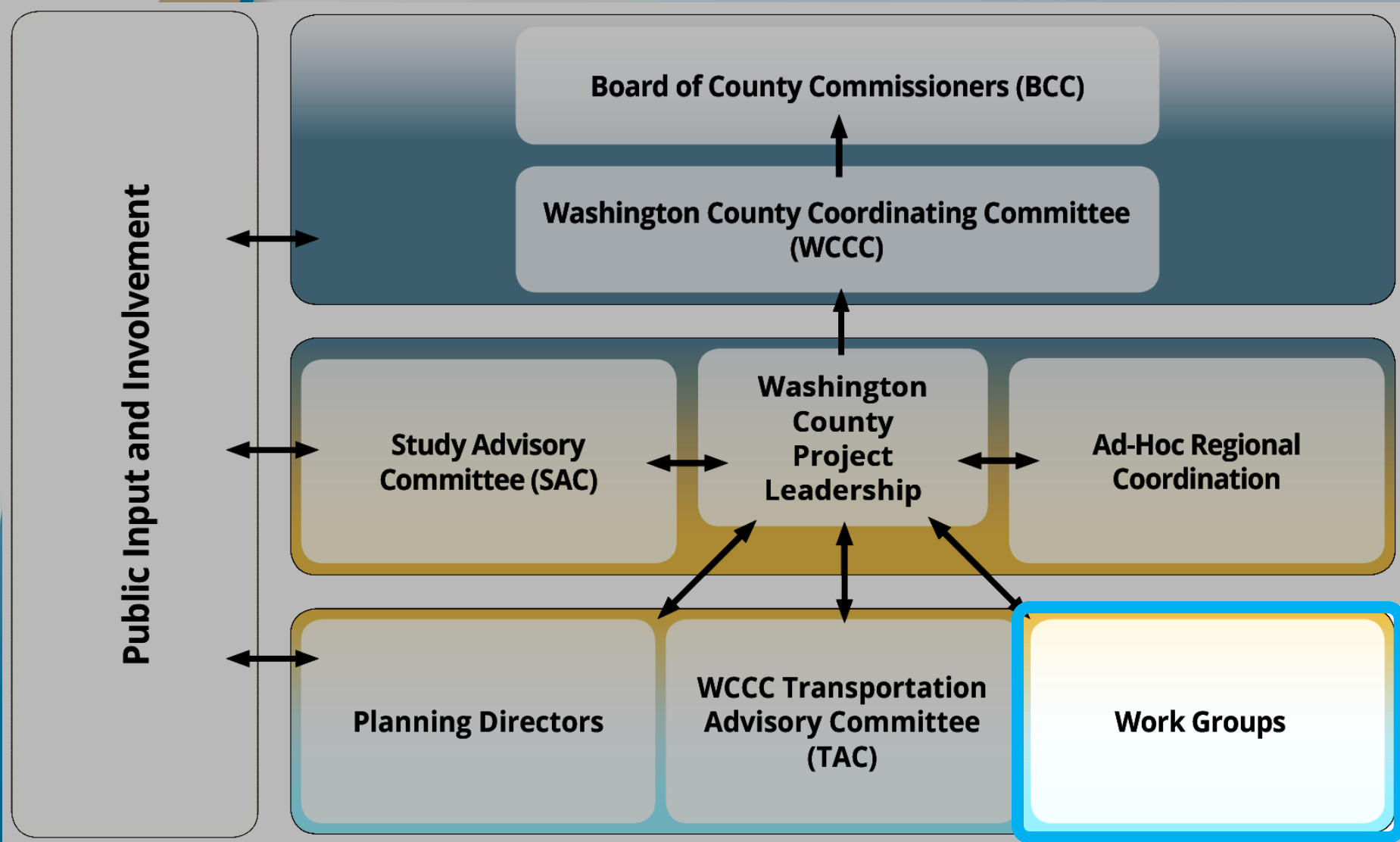


Input & Review





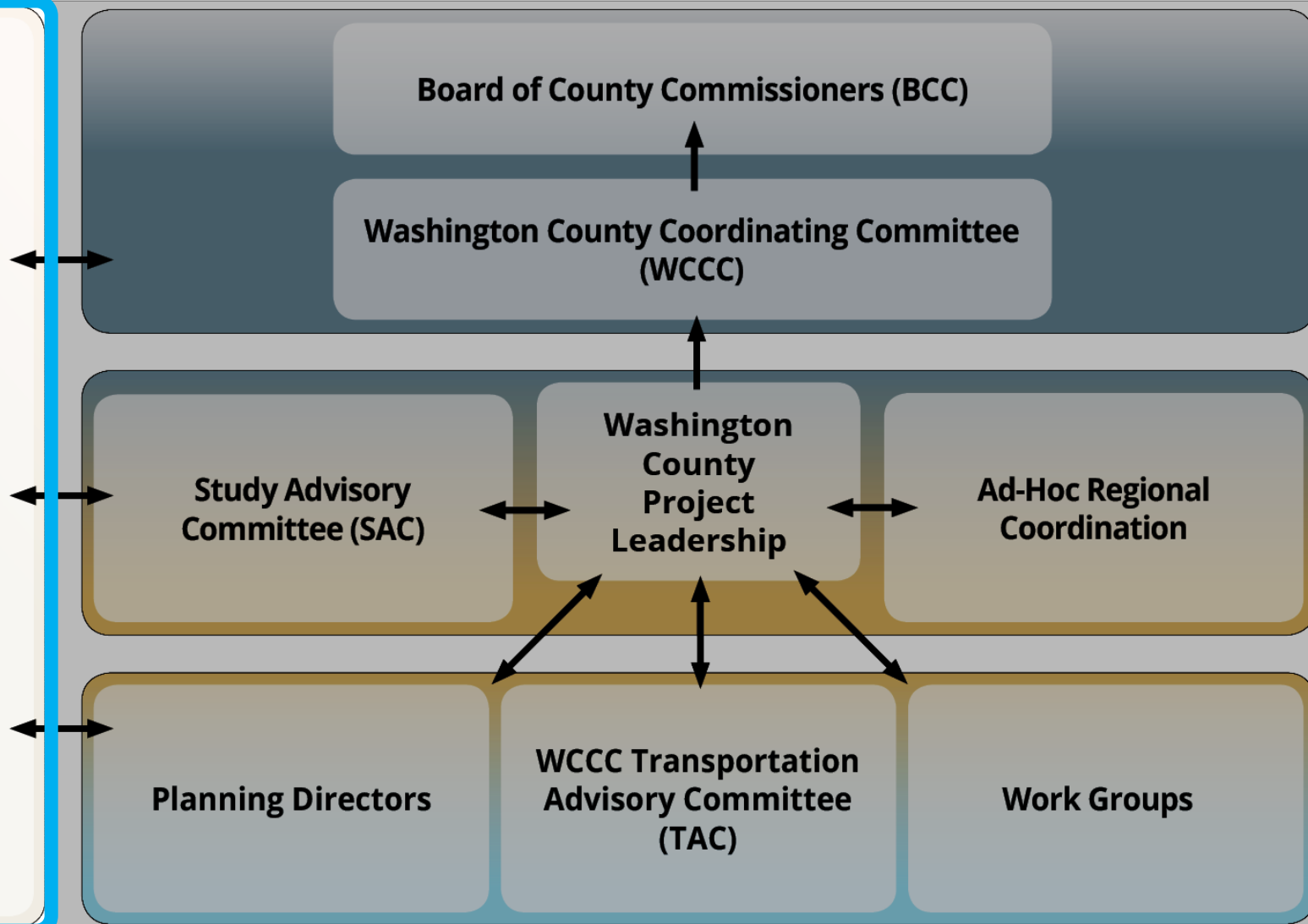
Input & Review





Input & Review

Public Input and Involvement





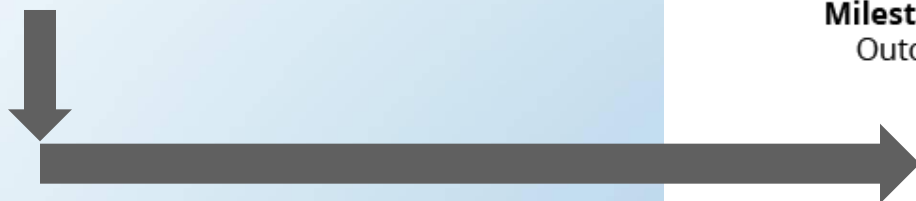
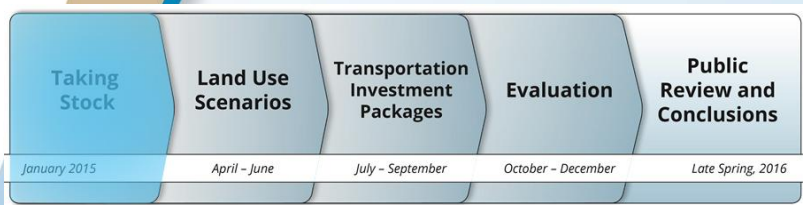
Study Process



Phase	Taking Stock
Timeframe	January 2015
Milestones/ Outcomes	<ul style="list-style-type: none"> Develop understanding of transportation problems and opportunities facing the county. Identify community values to guide this study.
Committees	
Study Advisory Committee (SAC)	★
Wa. Co. Coordinating Committee (WCCC)	✓
Board of County Commissioners (BCC)	✓
Interagency and Technical Coordination	→
Public Role	Refine values; contribute input on factors influencing future land use conditions.



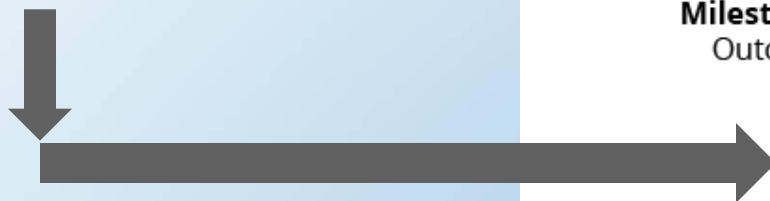
Study Process


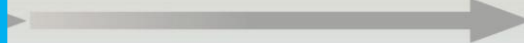


Phase	Land Use Scenarios	
Timeframe	April – June	
Milestones/ Outcomes	<ul style="list-style-type: none">• Develop evaluation measures reflecting community values.• Develop land use scenarios that reflect plausible futures.	
Committees		
Study Advisory Committee (SAC)	★	★
Wa. Co. Coordinating Committee (WCCC)		✓
Board of County Commissioners (BCC)		✓
Interagency and Technical Coordination		
Public Role		



Study Process



Phase	Transp. Investment Packages		
Timeframe	July – September		
Milestones/ Outcomes	<ul style="list-style-type: none">• Develop conceptual transportation packages; identify illustrative projects.		
			
Committees			
Study Advisory Committee (SAC)	★	★	★
Wa. Co. Coordinating Committee (WCCC)			✓
Board of County Commissioners (BCC)			✓
Interagency and Technical Coordination			
Public Role	Review transportation packages.		



Study Process



Phase	Evaluation
Timeframe	October - December
Milestones/ Outcomes	<ul style="list-style-type: none"> Evaluate and understand key outcomes and tradeoffs for each package.
Committees	
Study Advisory Committee (SAC)	★
Wa. Co. Coordinating Committee (WCCC)	✓
Board of County Commissioners (BCC)	✓
Interagency and Technical Coordination	→
Public Role	



Study Process



Phase	Public Review and Conclusions
Timeframe	Late Spring, 2016
Milestones/ Outcomes	<ul style="list-style-type: none"> Present and gather feedback on the tradeoffs between investment packages. Develop conclusions and an understanding of implications and next steps.
Committees	
Study Advisory Committee (SAC)	★
Wa. Co. Coordinating Committee (WCCC)	◆
Board of County Commissioners (BCC)	Accepts Conclusions ◆
Interagency and Technical Coordination	→ ✓
Public Role	Discuss tradeoffs between investment packages.



What You Can Do

- Help build awareness
- Sign up for the study update list
- Check website and respond to surveys
- Ask questions and provide comments
- Invite us back at study milestones



Thank you!



Questions?



Study Contact Information

www.co.washington.or.us/wcts

Department of Land Use and Transportation

503-846-4530