



Welcome Legislators

Cooper Mountain
175th Avenue Neighborhood
Association

www.save175th.org

Thank You
Sam Louke
Soren Vestergaard
Fran Warren

CURRENT PROBLEM/SITUATION:

- 175th is a rural arterial and is being misused “...to accommodate significant amounts of urban-to-urban through-traffic...” and is an inappropriate shortcut through a rural neighborhood. Accident rate is increasing (we have subset of reports to demonstrate this)
 - 175th currently is an over-trafficked country road and is not suited to be an arterial due to: steep grade, active landslide, blind spots, curves, mailboxes on the east side only (west side residents must run across the road), and private driveways opening directly onto the road.
 - 175th cannot be feasibly modified to handle the projected 2035 traffic - increasing from 6K – 17K cars/day per WashCo LUT.
- **There is currently no efficient N-S transportation route for existing commuters and this problem will increase significantly by the development of the 3 new planning areas:**
- Beaverton’s South Cooper Mountain (3000 homes)*
 - Tigard’s River Terrace (3000 homes)*
 - South Hillsboro (9000 homes)*
- => roughly 40,000 people

•What we're asking for:

•SHORT TERM:

--Safety measures in place to make 175th safer for existing residents and commuters before the massive increase in traffic
we are experiencing positive responses from WashCo LUT and our County Commissioners. Our process seems to be working well here.

•FIRST STEP TO LONG TERM:

--We need your help to expedite a connection of Roy Rogers Road to Cornelius Pass Rd thus routing the southern bedroom commuters more safely and efficiently to their jobs in the north.

AROUND THE MOUNTAIN ROUTING:

Plan for an *Around The Mountain* route to funnel north-south traffic away from 175th and the inherent weather and safety problems on Cooper Mountain (see maps below):

- Route traffic coming north on Roy Rogers Rd. bound for Beaverton to the east to travel north on Murray.
- This exists now.
- Create a route for traffic coming north on Roy Rogers Rd. bound for Hillsboro to the west of Cooper Mountain on a new arterial that would follow the existing Scholls Ferry, Tile Flat and Clark Hill roads and would link into the end of the Cornelius Pass extension in South Hillsboro.
- The route along Scholls Ferry, Tile Flat and Clark Hill exist today all the way from Roy Rogers to Farmington Rd.

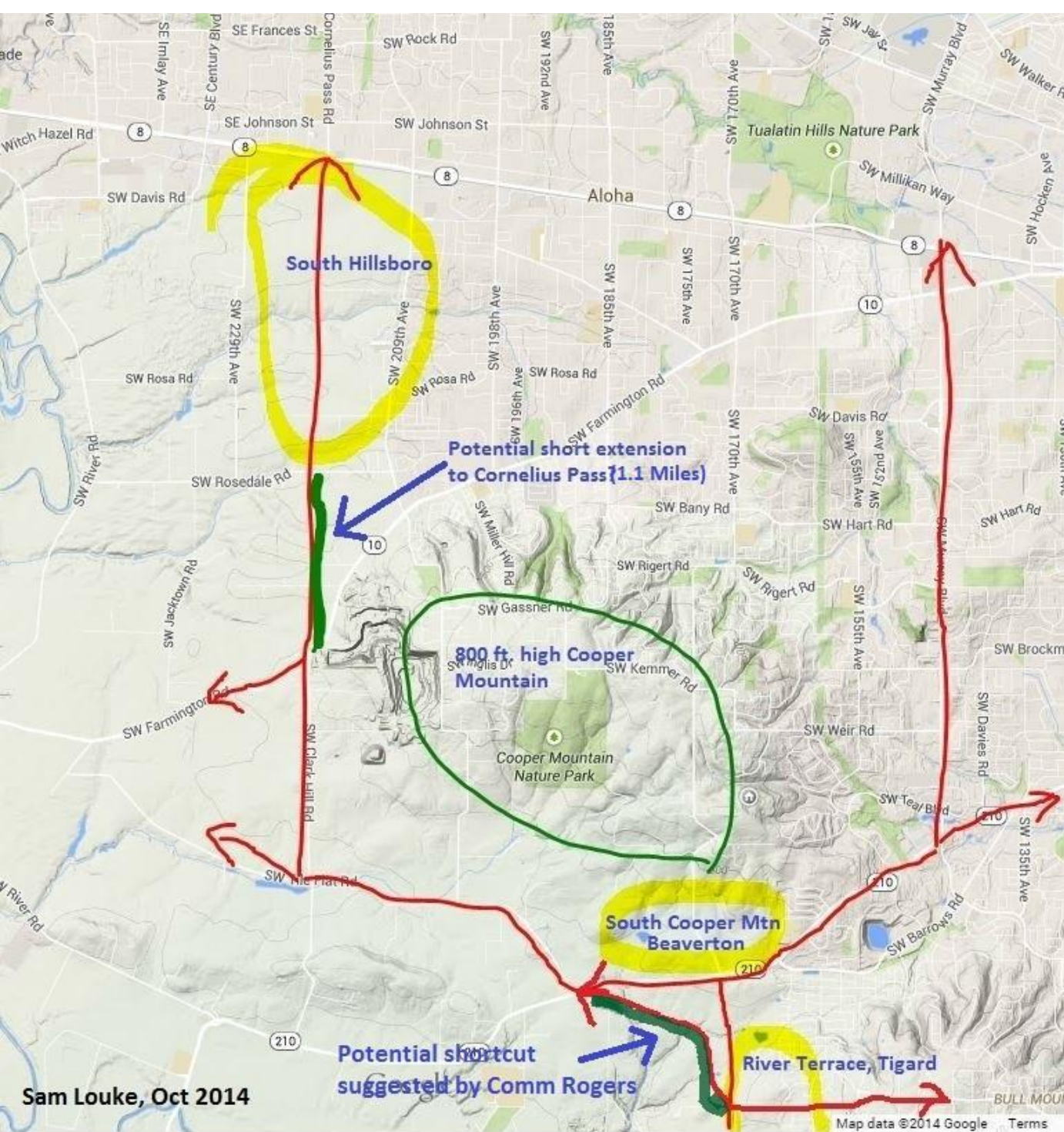
➤ **1.1 mile extension north of Farmington Rd would need to be added to link to the future end of Cornelius Pass.**

➤ **Possibly connect Roy Rogers Rd. to Tile Flat could be added later to reduce the traffic at the Roy Rogers/Scholls Ferry intersection.**

➤ **Possibly need to change road usage designation, eg. Clark Hill Rd. may need to be upgraded from Rural Collector Road**

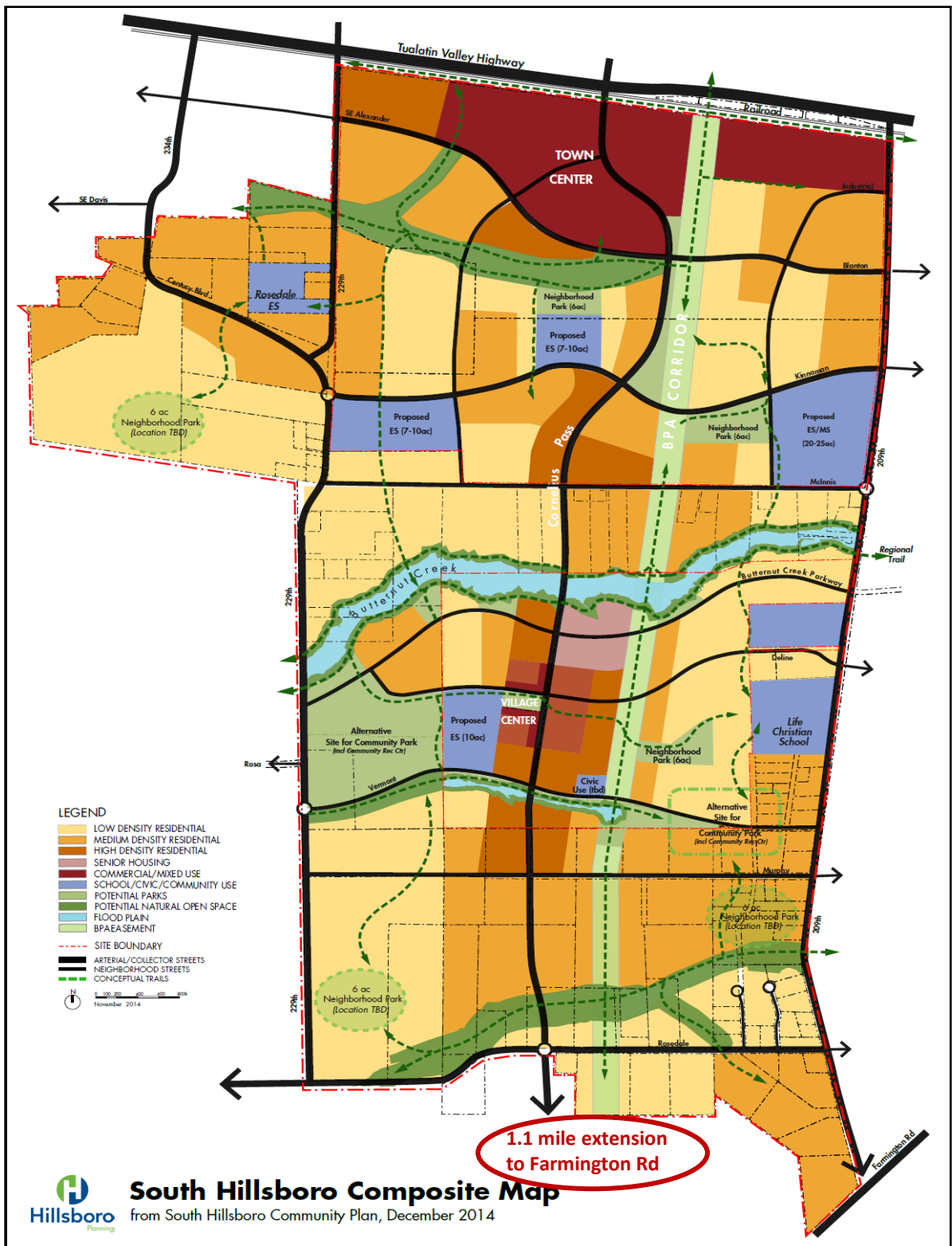
➤ **Remove political barriers as needed**

Sketch of the Around The Mountain plan showing existing and new western route around Cooper Mountain:



Sam Louke, Oct 2014

South Hillsboro Plan showing the Cornelius Pass Rd extension to Rosedale and points south:



•What We've Done Thus Far:

- Timely, validated meeting and reporting to neighbors
- Meetings with County Commissioners, Director of LUT, WashCo Transportation Planners
- Testifying at Commission Hearings
- Attending Citizen Involvements

• How best can we work with our Legislators?

We're seeing some excellent positive proposals by Washington County Transportation on short-term low-cost solutions such as signage but what the County really needs is to re-route some of the traffic.

- We need to escalate to work on the Governance & Funding issues –
 - What do you think about this issue?
 - How can we do what is necessary?
 - What would that process look like?
 - Next Steps?

BACKGROUND INFORMATION

- **WHO WE ARE:**

**homeowners / neighbors working
in a cooperative manner with
governing agencies**

- we live along 175th Ave from Scholls Ferry Rd to Rigert Ave;
- 200+ followers in support and growing ;
- now partnering with CPO6; Beaverton NAC's
- coordinating with CPO10 for the LONG TERM.

- **WHAT BROUGHT US HERE:**

- Beaverton South Cooper Mountain (SCM) – 3000 homes
- RiverTerrace (Tigard) – 3000 homes
- South Hillsboro – 9000 homes

...this is not just change, this is upheaval

**It will challenge transportation routes all
around the area**

“It’s issues that bring people to the table”

- **WHAT WE WANT TODAY:**

- How can we work best with
our Legislators?**

Per Current Washington County Transportation Planning

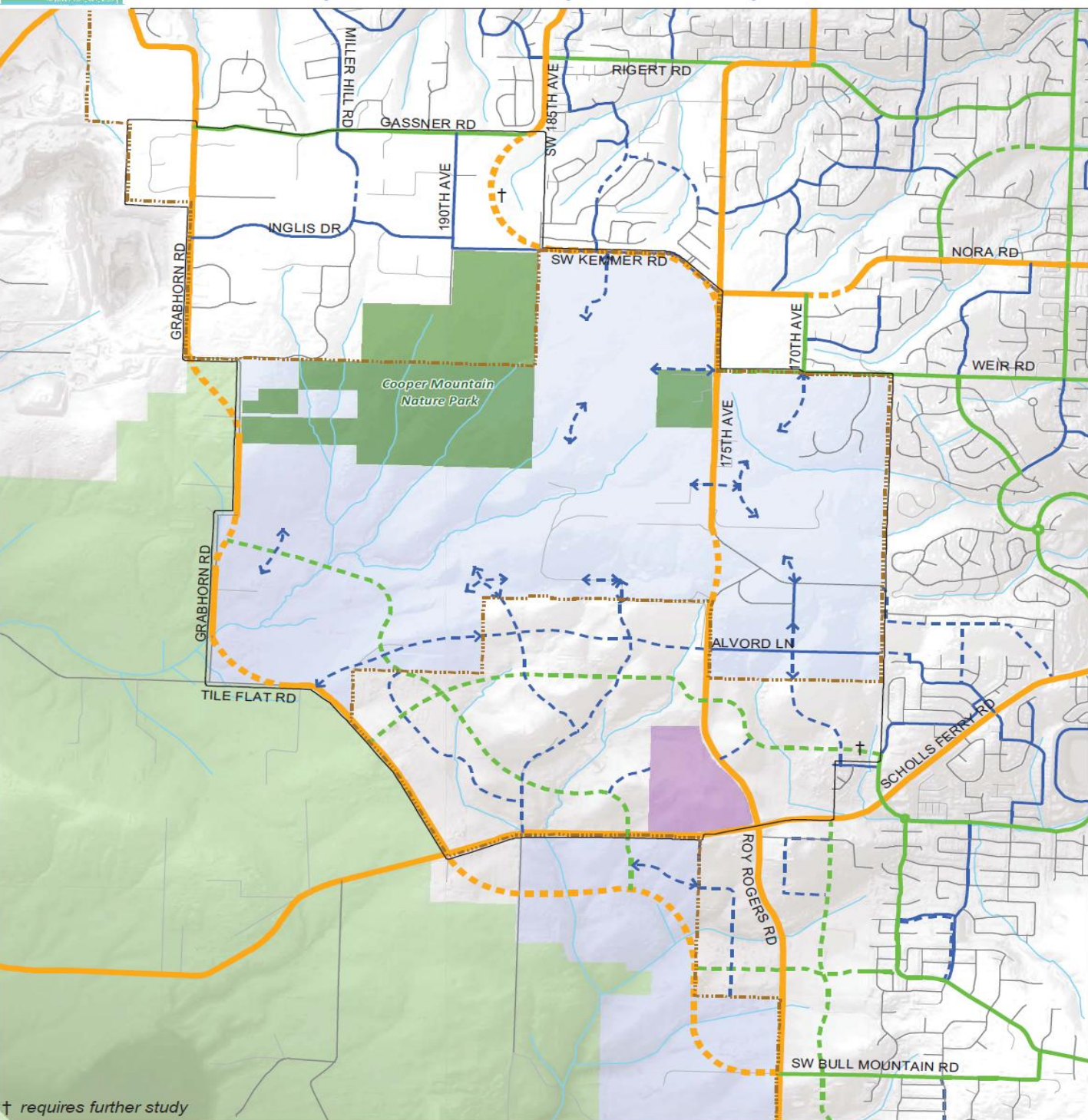
1. 175th was designated an arterial in 1988
2. Projected traffic increases along 175th:
Per City of Beaverton Transportation Consultants: =>
it will double** 2013 – 2035; tripling** vs 2008

2008	2013	2035
6K cars/day**	8.5K cars/day**	17/18K cars/day**

3. One Draft Plan Shows: “straighten the kink”
in next 0-10 years; E-W/N alternative (*Tile Flat/Grabhorn*) alternative (Project 13) in next 10-20 years
4. Follow Longer-Term Plan on the following URL:
(see the link on our website)
<http://www.co.washington.or.us/LUT/Divisions/LongRangePlanning/Publications/transportation-plan.cfm>

**** lots of metrics caveats**

South Cooper Mountain Concept & Community Plans



Final Preferred Transportation Framework

- Proposed Functional Classification***
- Arterial
 - Collector
 - Neighborhood Route
 - Local
 - Private
- Rural Reserve****
- Urban Reserve
 - Study Area
 - Urban Growth Boundary
 - Existing Parks
 - Planned High School Site
 - Streams

* Realignments and new roads are shown in dashed lines. New roads east of study area are based on Washington County's Transportation System Plan; new roads within UGB south of study area are based on current River Terrace Community Plan transportation planning. All new road alignments are conceptual.

** As amended by HB 4078A.



**½ MILE+ LONG BACKUPS ALREADY
... traffic expected to triple, but the
mountainous terrain and winter
weather just cannot support it**

**175th going South towards Scholls
Ferry**

**Top of 175th heading North at
Reusser Ct.**



**THANK YOU WashCo LUT!!
New Safety Sign just erected
May 2015...**





Increase in accidents on 175th over the past year ... with increase in traffic.

Note: 2 accidents at the “kink” in March 2015 were DUI, were actually due to excessive speed!

ACCIDENTS AS REPORTED BY TVFD HAS INCREASED ON 175th

