

December 3, 2014

Beaverton Planning Commission
The Beaverton Building
12725 SW Millikan Way
Beaverton, OR 97076

Dear Chair Overhage and Commission Members:

My name is Roger Staver, and my wife & I live at 17470 SW Reusser Court. Our home is on 175th, about 55 feet from the roadway at the closest point (our bedroom).

Although we and our neighbors have a multitude of concerns about the probable traffic impact on W 175th the South Cooper Mountain Development (SCMD) will have, I want to focus on the portion of 175th known as "The Kink", and the current proposal to straighten it.

There are few elements of 175th that offer any traffic calming opportunities – The Kink is one. We are continuously aware of a multitude of motorcycles, cars and trucks accelerating as they come from the South. When they exit The Kink and the curve to the right that follows it, they accelerate, but, because of The Kink, the speeds they are able to attain are not nearly what they would be with The Kink removed.

The current configuration of 175th in the area of The Kink and the curve just North of it definitely slows traffic. Straightening The Kink will give traffic a "straight shot", adding a little over a quarter mile of straight roadway (the Standard distance for a drag race).

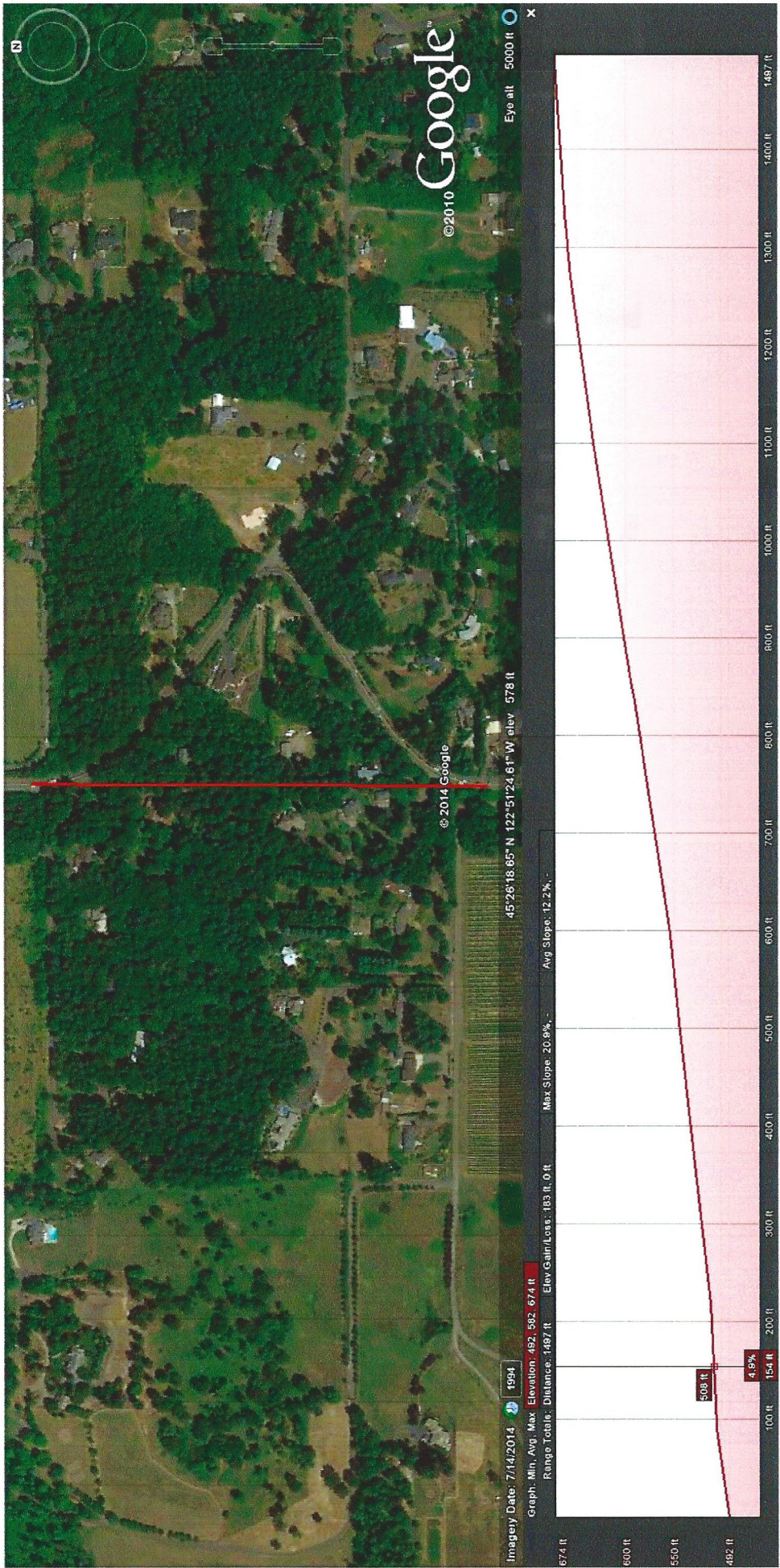
This straightening will do more than encourage higher speeds. For motorcycles and built-for-speed cars and trucks, the roller coaster ride 175th offers and the added acceleration roadway this straight stretch offers will provide greater opportunity for higher speeds and negative G's, i.e., getting airborne. Even now with The Kink, some drivers and riders achieve speeds that create potential traffic incidents (a motorcycle accident in this area two years ago took the lives of the two riders). It's something we hear and see almost daily, particularly in the warmer months, and can expect to see increase if the straightening goes forward.

I have included three Google Maps to show the area and the elevations involved. #1 shows The Kink; #2 shows the area just North of The Kink to the Dog Park, the "airborne opportunity" area; #3 is the same as 2, but goes to Kemmer. The location of our home is also shown on 2 & 3.

Please give this situation careful consideration – drive this area, and look at the temptations for added speed and the potential hazards if The Kink is removed, particularly with the added traffic from SCMD.

Thank You,


Roger Staver



T



21



3